

# DS-2CD2700F-I Series

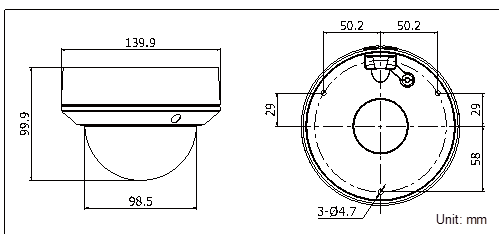
## IR Dome Network Camera



### Key Features

- 1.3 MP/3 MP High Resolution
- HD Real-Time Video
- IR LEDs: Up to 30 Meters
- DWDR, 3D DNR, and BLC
- On-Board Storage (Up to 128 GB)
- IP66
- Vandal Resistant

### Dimensions



### Accessories



### Order Models

DS-2CD2712F-I

DS-2CD2732F-I

	DS-2CD2712F-I	DS-2CD2732F-I
<b>Camera</b>		
Image Sensor	1/3" progressive scan CMOS	
Minimum Illumination	0.014 lux @ f/1.4, AGC on, 0 lux with IR	0.01 lux @ f/1.4, AGC on, 0 lux with IR
Shutter Speed	1/3 s to 1/100,000 s	
Lens	2.8 to 12 mm @ f/1.4, angle of view: 98.4° to 30.2°	2.8 to 12 mm @ f/1.4, angle of view: 91.2° to 28.3°
Lens Mount	Φ14	
Auto Iris	DC drive	
Day/Night	ICR	
Digital Noise Reduction	3D DNR	
Wide Dynamic Range	Digital WDR	
Backlight Compensation	Yes, zone configurable	
Angle Adjustment	Pan: 0° to 355°, tilt: 0° to 75°, rotation: 0° to 355°	
<b>Compression Standard</b>		
Video Compression	H.264/MJPEG	
H.264 Codec Profile	Main profile	
Bit Rate	32 Kbps to 12 Mbps	
<b>Image</b>		
Max. Image Resolution	1280 × 960	2048 × 1536
Frame Rate	30 fps (1280 × 960), (1280 × 720)	20 fps (2048 × 1536), 30 fps (1920 × 1080), (1280 × 720)
Image Settings	Rotate mode, saturation, brightness, contrast, sharpness adjustable through client software or Web browser	
ROI	Supported	
<b>Network</b>		
Network Storage	NAS (supports NFS, SMB/CIFS)	
Alarm Trigger	Line crossing, intrusion detection, motion detection, tampering alarm, storage exception	
Protocols	TCP/IP, ICMP, HTTP, HTTPS, FTP, DHCP, DNS, DDNS, RTP, RTSP, RTCP, PPPoE, NTP, UPnP, SMTP, SNMP, IGMP, 802.1X, QoS, IPv6, Bonjour	
System Compatibility	ONVIF, PSIA, CGI, ISAPI	
General Functionalities	Flickerless, heartbeat, mirror, privacy mask, watermark, IP address filtering, anonymous access	
<b>Interface</b>		
Communication Interface	1 RJ-45 10 M/100 M Ethernet interface	
Onboard Storage	Built-in microSD/SDHC/SDXC card slot, up to 128 GB	
<b>General</b>		
Operating Conditions	-30° C to 60° C (-22° F to 140° F), humidity 95% or less (non-condensing)	
Power Supply	12 VDC ±10%, PoE (802.3af)	
Power Consumption	Maximum 7 W	
Impact Protection	IEC60068-2-75Eh, 20J; EN50102, up to IK10	
Ingress Protection Level	IP66	
IR Range	20 to 30 meters	
Dimensions	Φ140 mm x 99.9 mm (Φ 5.51" x 3.94")	
Weight	1000 g (2.2 lbs)	